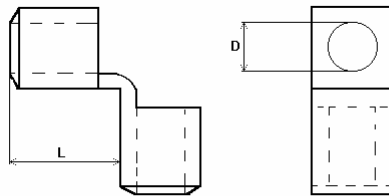
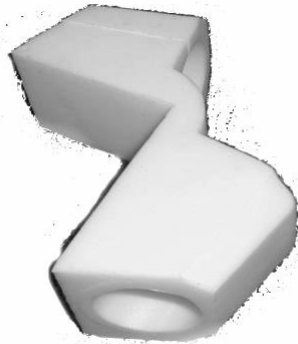


STOBIFORM - PU Edge Protection "KWS"



Another special design of the STOBIFORM - PU Edge Protection is the edge protection for fibre and steel ropes called "KWS", which can be supplied in 2 sizes. It has round openings, which the ropes are pulled through. Concentrated loads are therefore distributed over an area. This protects both the lifting attachment and load.

Name	Diameter D	Length L	Approx. weight per unit
KWS 25	30 mm	80 mm	0,3 Kg
KWS 40	50 mm	125 mm	1,0 Kg

Material: Polyurethane Elastomer approx. 80 Shore A,
Other sizes and designs on request.
All sizes are approximate! Techn. changes reserved.

Stockmeier & Nauer Kunststofftechnik
GmbH & Co. KG
Zeppelinstr. 16
32051 Herford
GERMANY
Tel. +49/5221/9265-0 Fax: - 10